

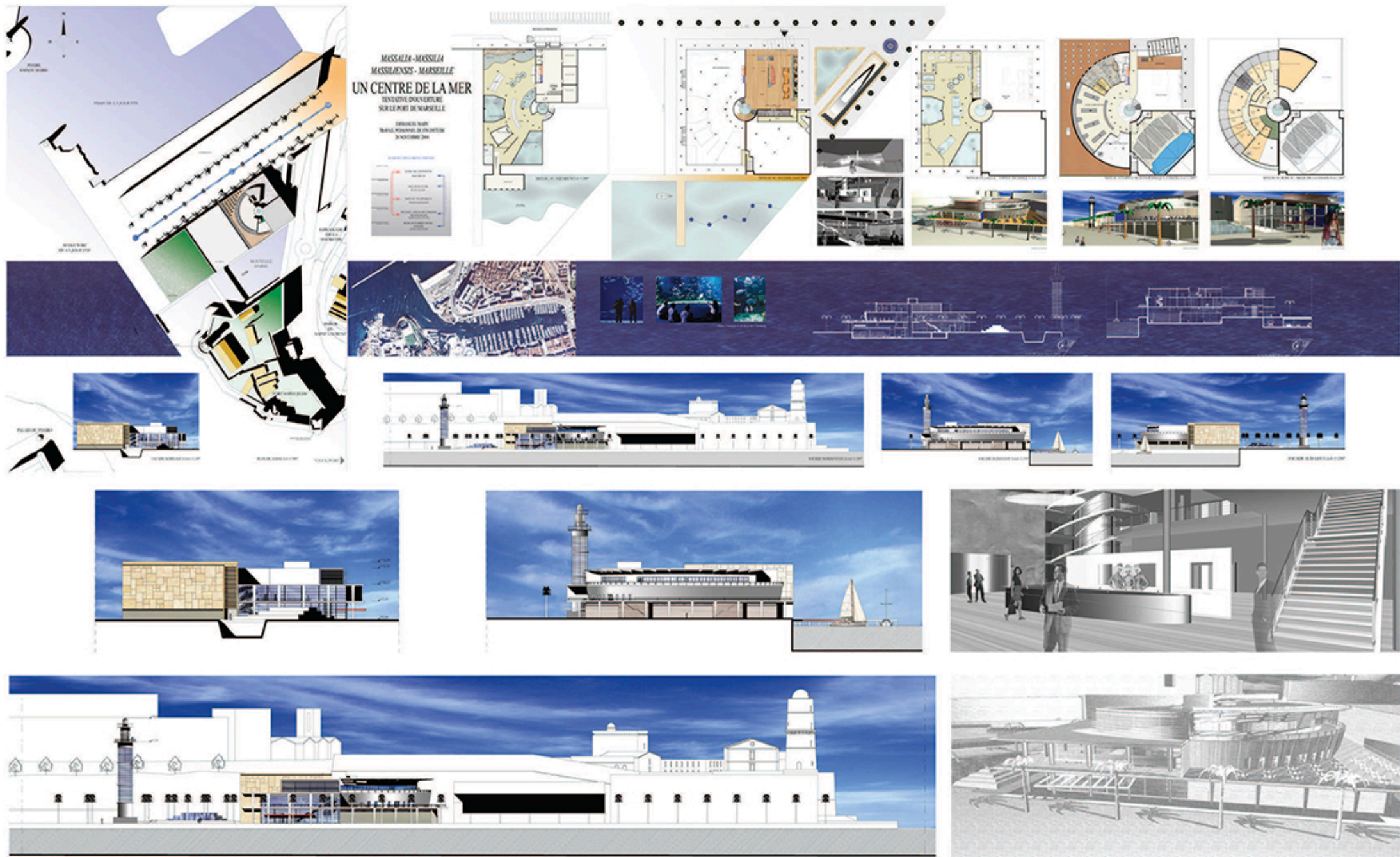
EMMANUEL MARY+ ARCHITECTE DPLG

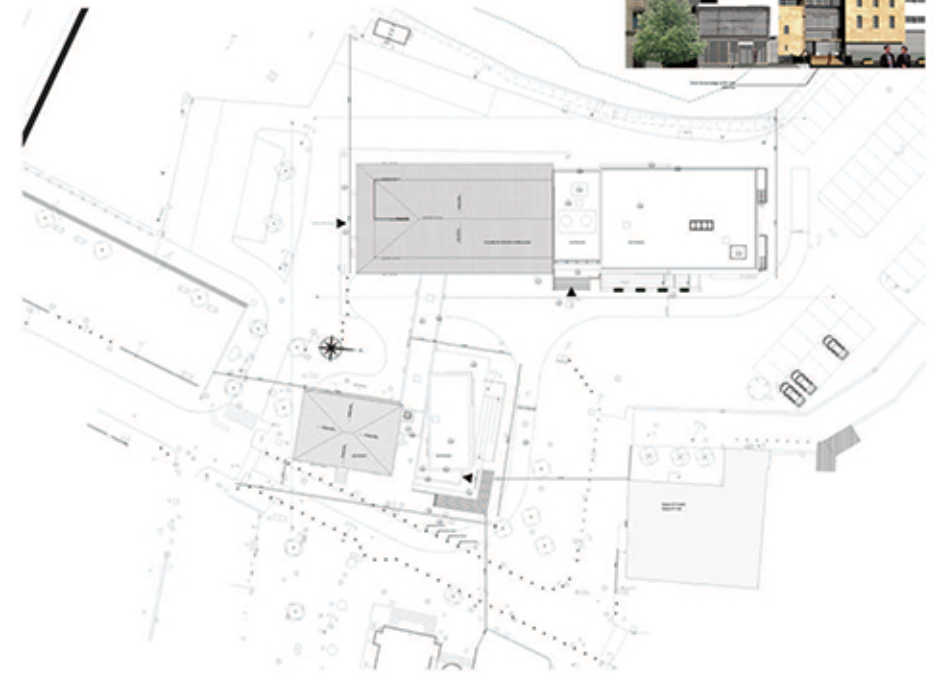
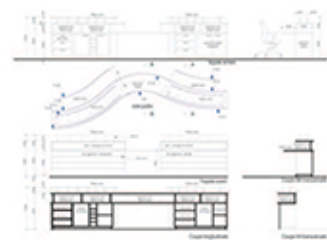
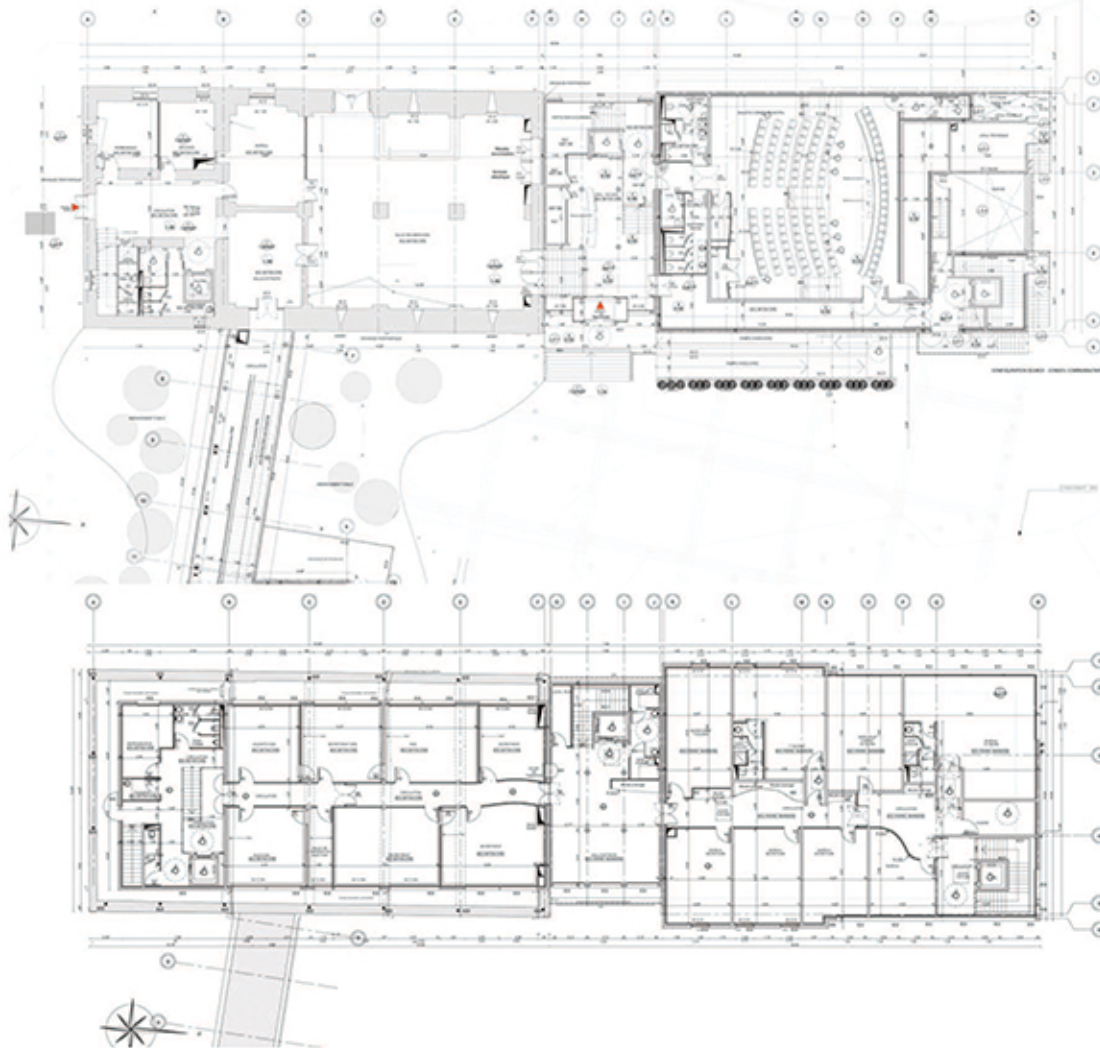
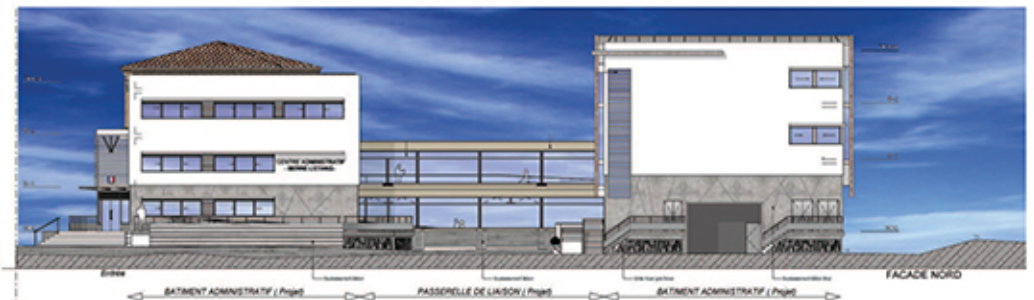
«design makes plans, people make life »

93, BOULEVARD BARRY LES FLORALIES BAT B4
13013 MARSEILLE
06 84 99 69 86
maryarchitecture@free.fr

REFERENCES 2001 2019









PERSPECTIVE AERIENE OUEST



Sur le site de la Vallée Centre de Stockage



PERSPECTIVE AERIENE NORD



PERSPECTIVE AERIENE EST

Projet de construction et d'exploitation
d'un centre de traitement des déchets du Roannais
par tri mécano-biologique et stockage

Syndicat d'Etudes et d'Elimination des Déchets du Roannais



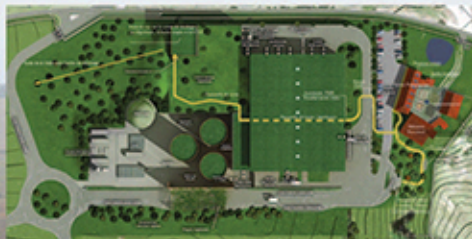
Groupement URBASER / VALORGA International



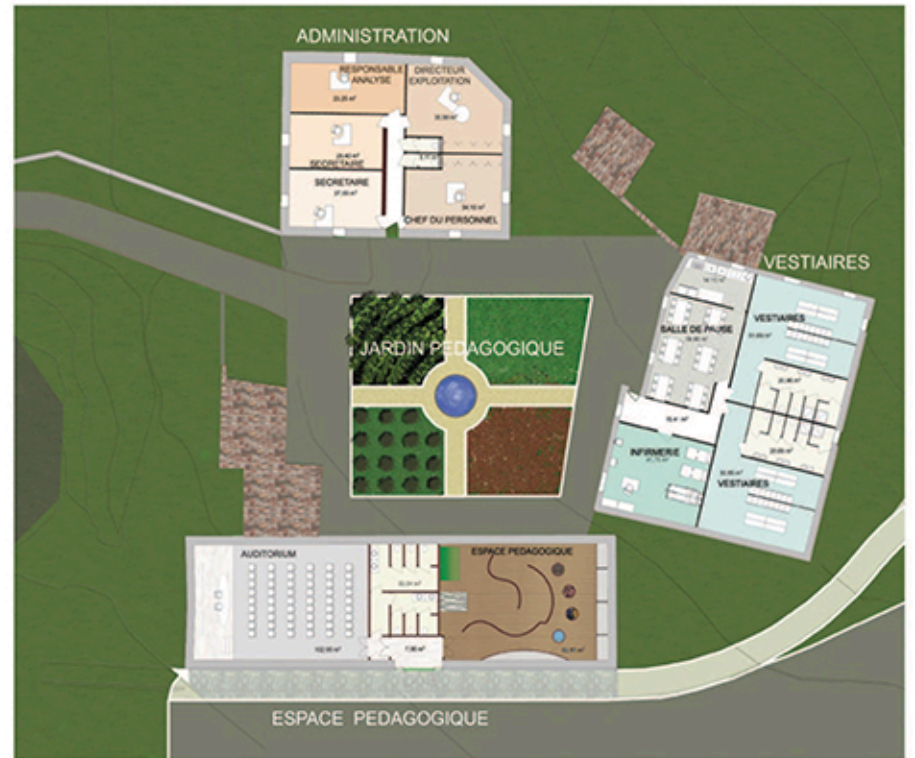
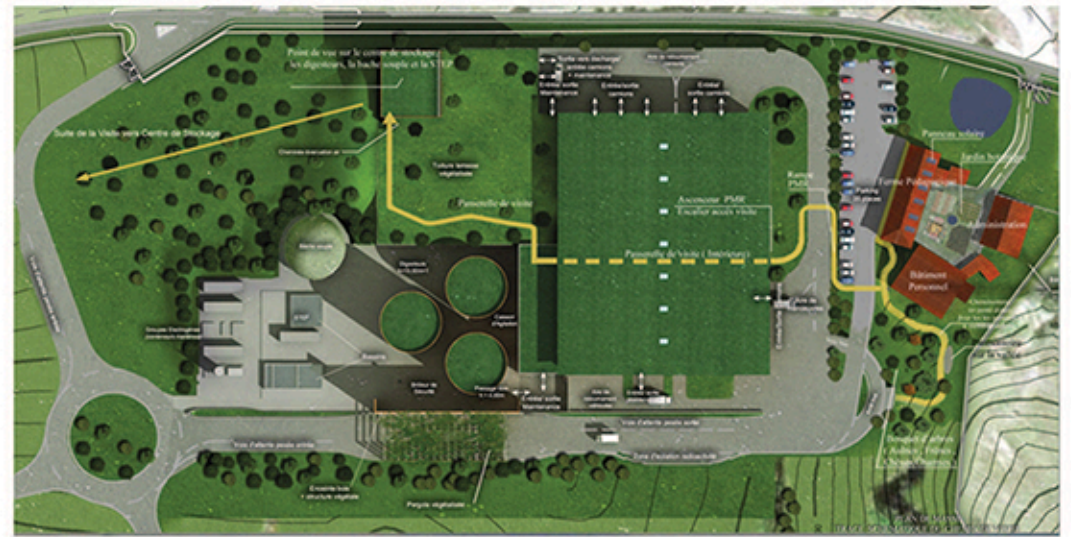
FRANCK BUCHHEIT

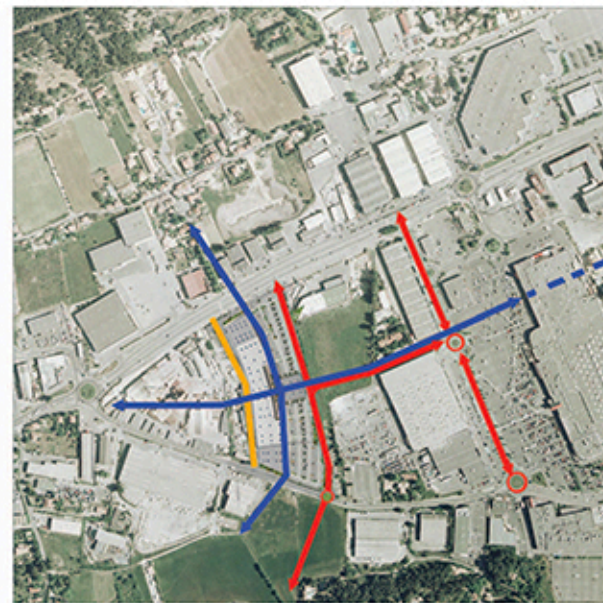
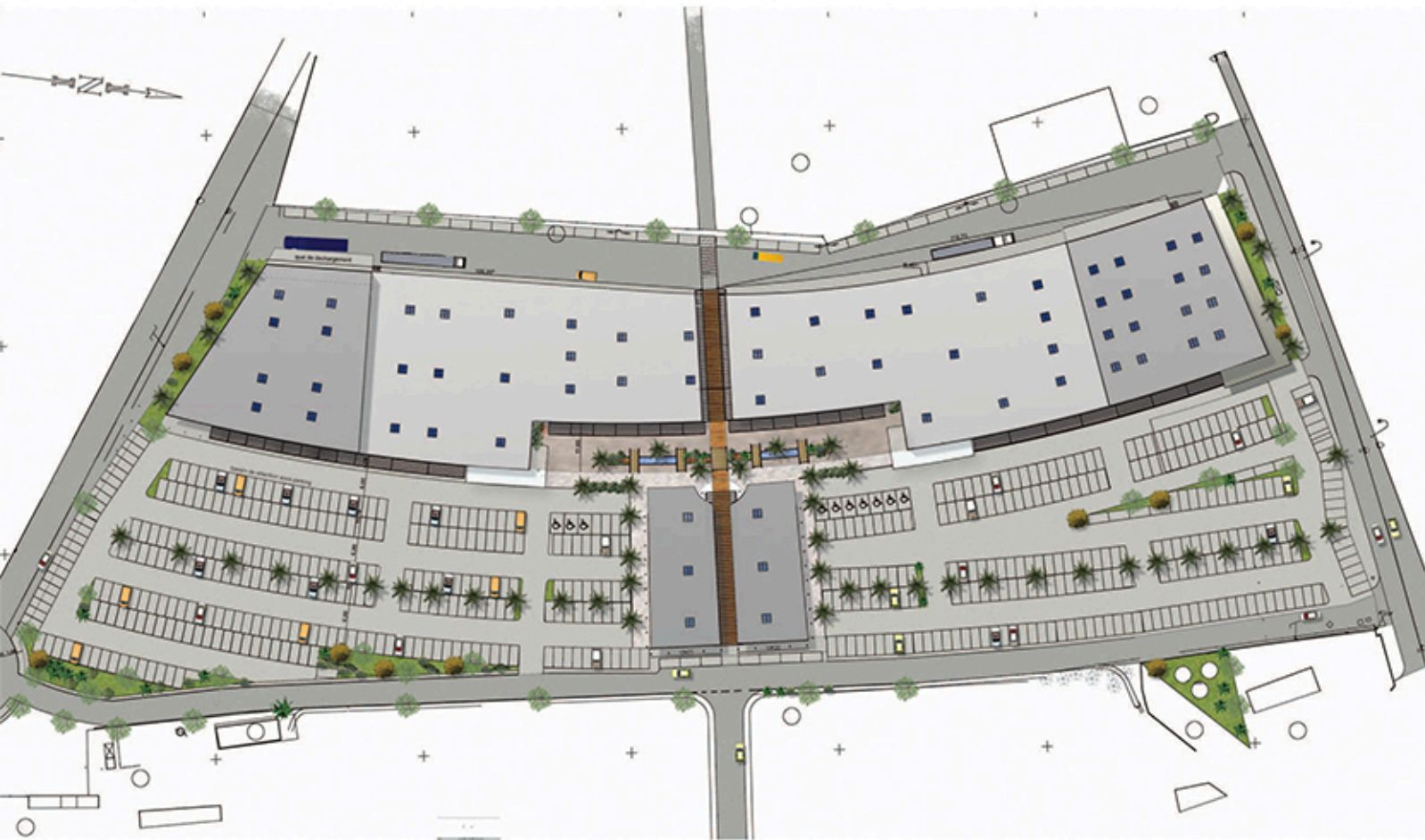


PLAN DE SITUATION



PLAN TECHNIQUE DE VISITE PEDAGOGIQUE











Elevation SSE 001 Provisoire A



Elevation SSE 001 Provisoire A



Elevation SSE 001 Provisoire B



Elevation SSE 001 Provisoire B



Elevation SSE 001 Provisoire C



Elevation SSE 001 Provisoire C



Elevation NNO 001 Provisoire A



Elevation NNO 001 Provisoire A



Elevation NNO 001 Provisoire B



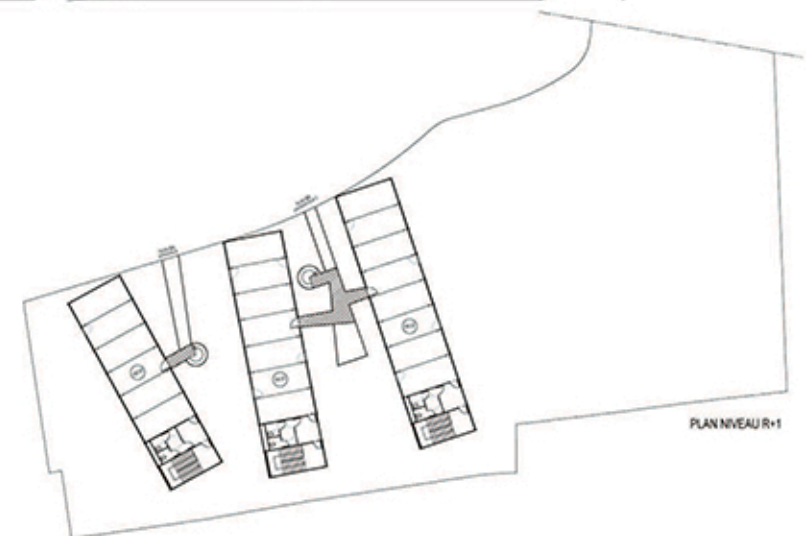
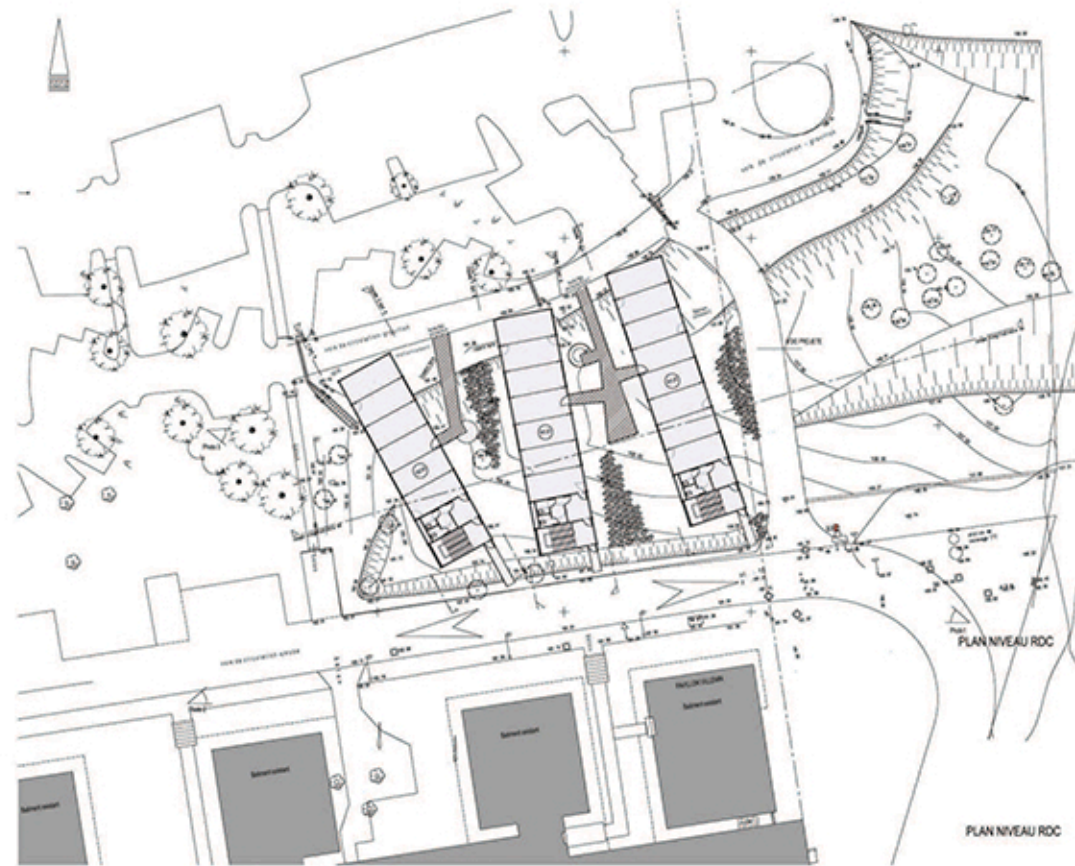
Elevation NNO 001 Provisoire B

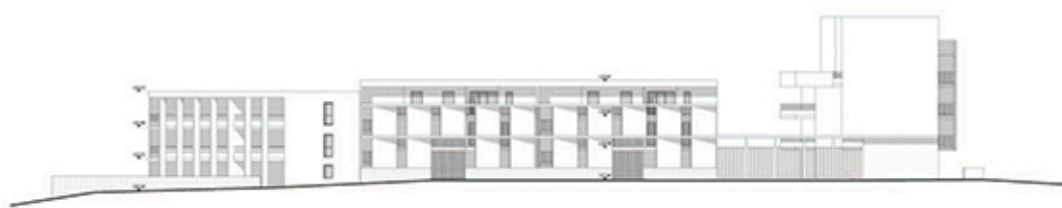


Elevation NNO 001 Provisoire C

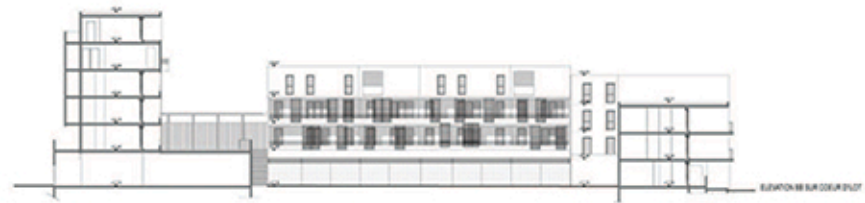


Elevation NNO 001 Provisoire C





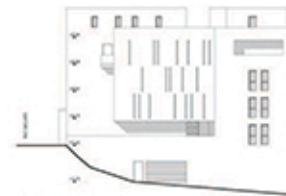
ELEVATION - RUE GALLARD



ELEVATION - RUE DE LA COURNEUVE



ELEVATION - PLACE BEUGNOT

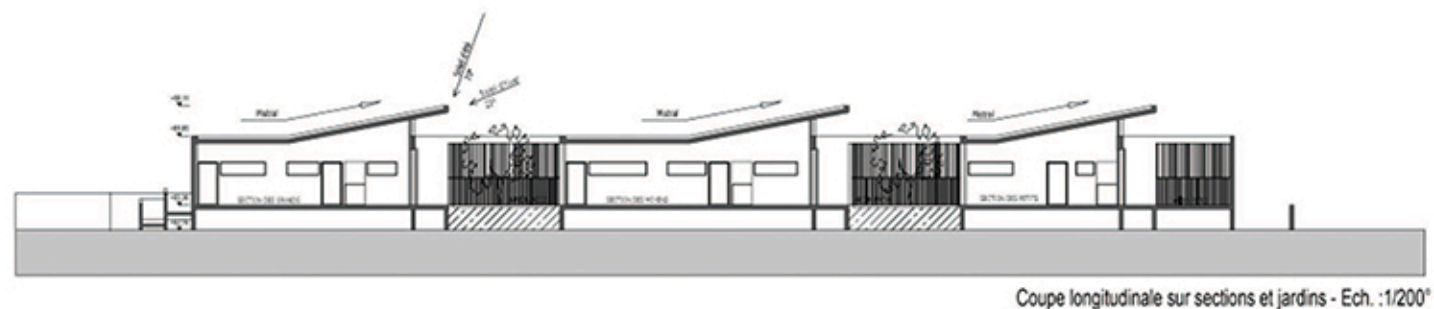
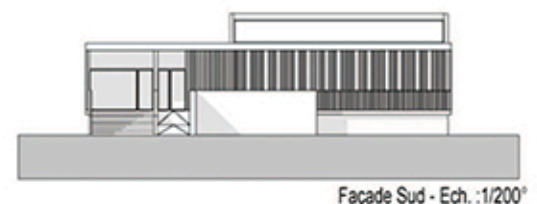
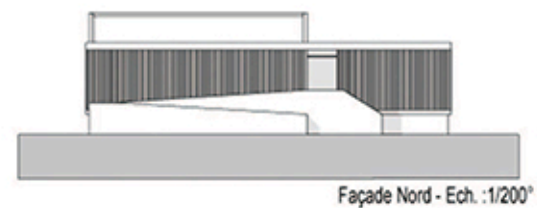
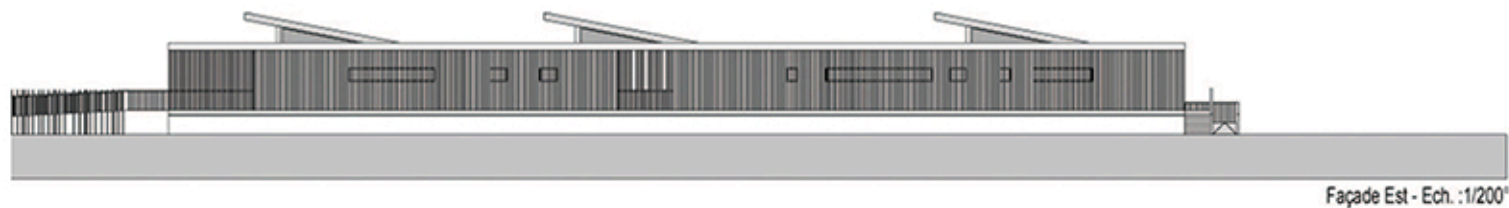


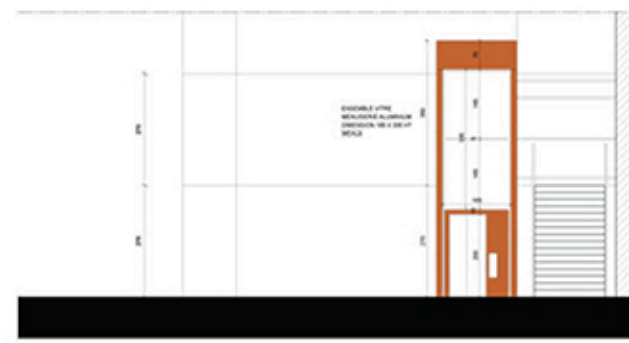
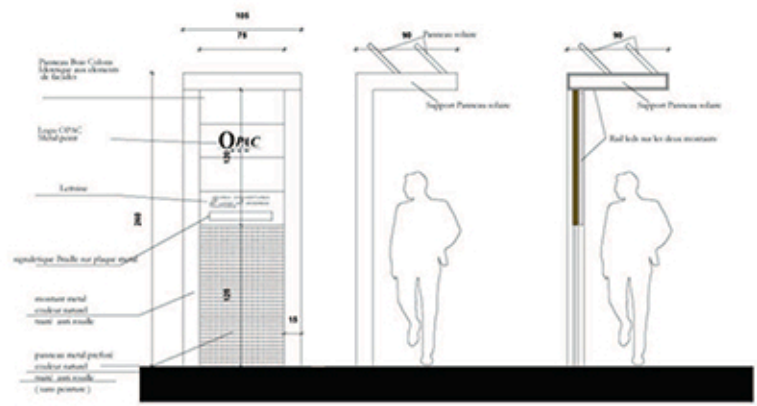
ELEVATION - PLACE GALLARD

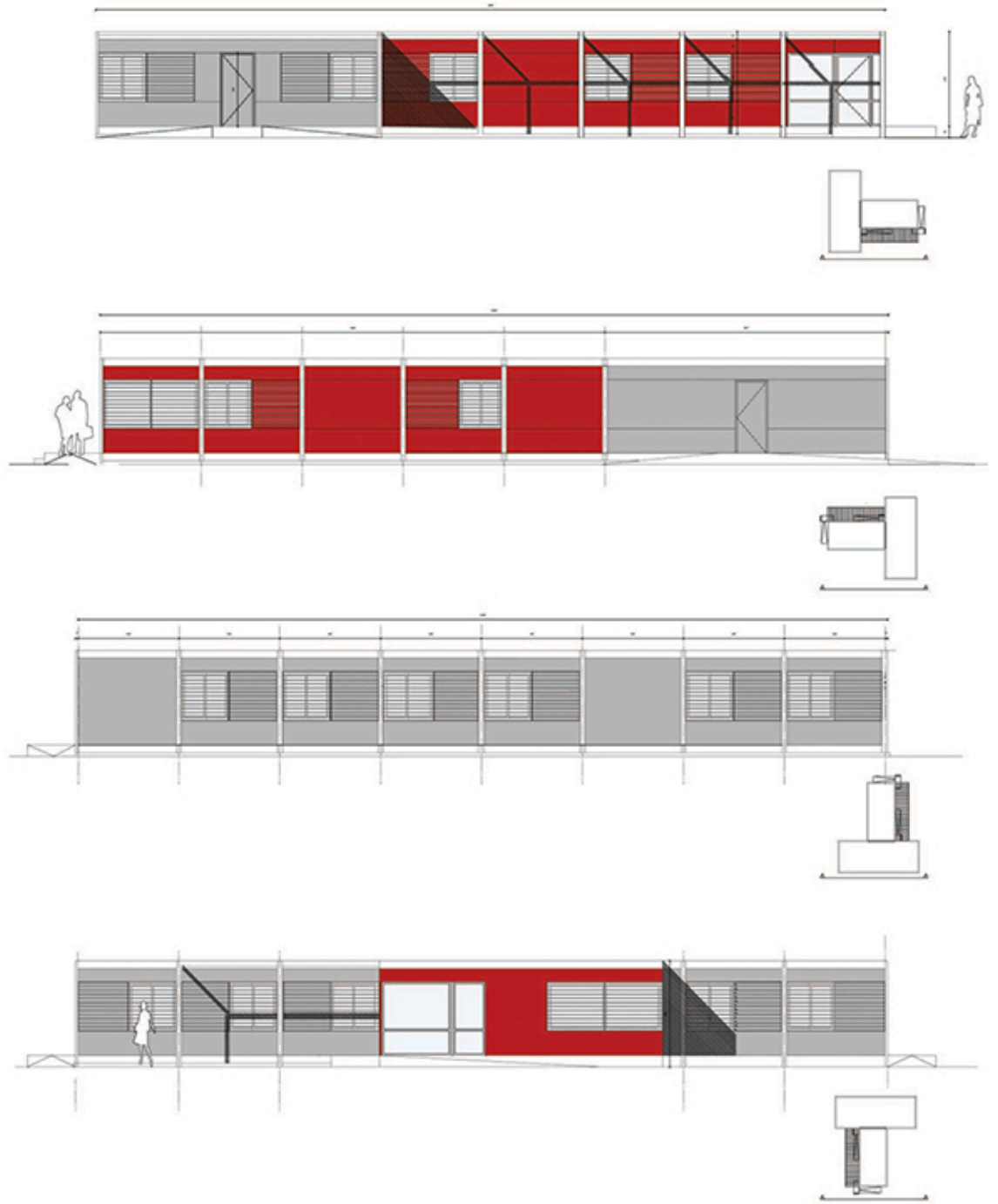
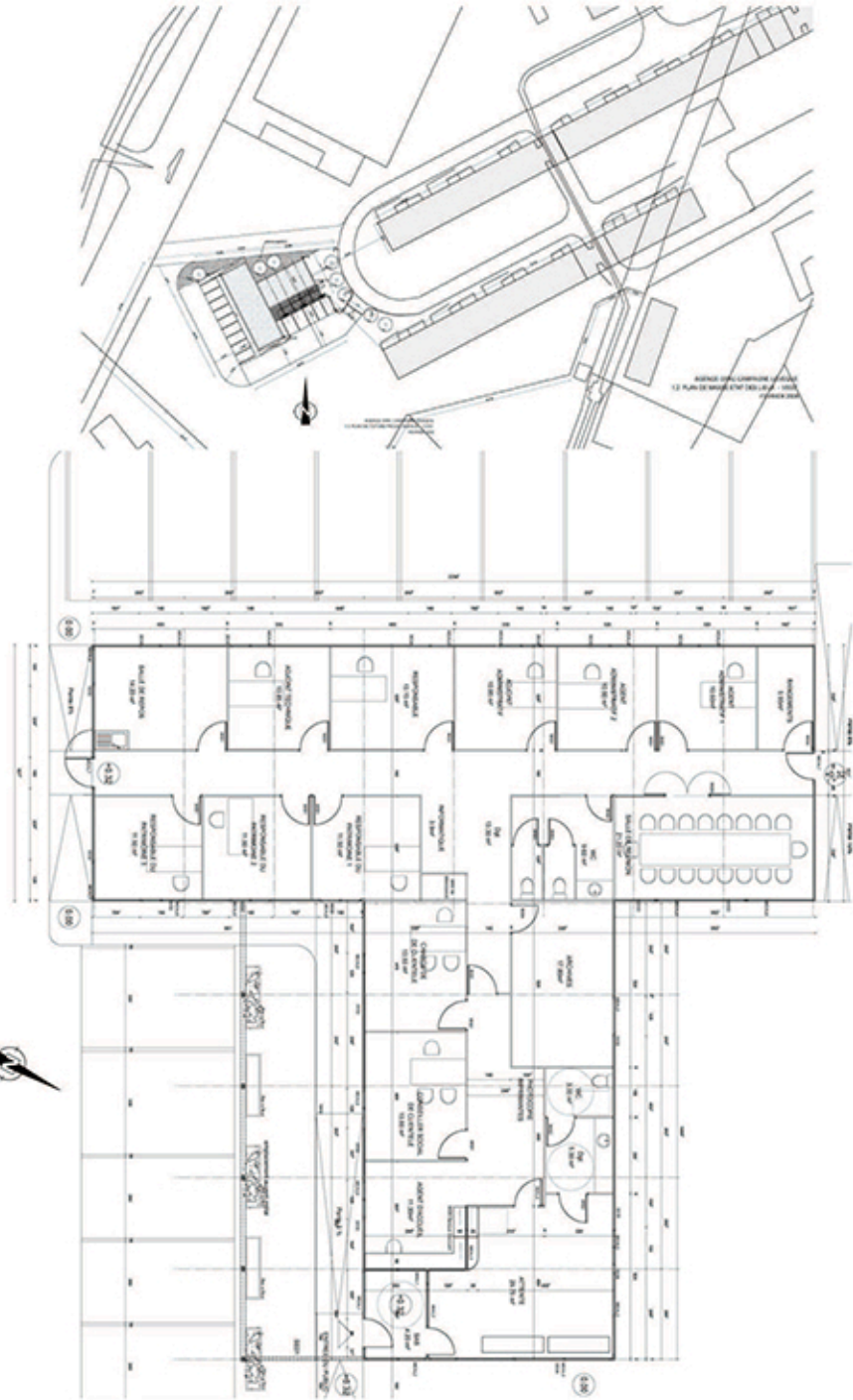


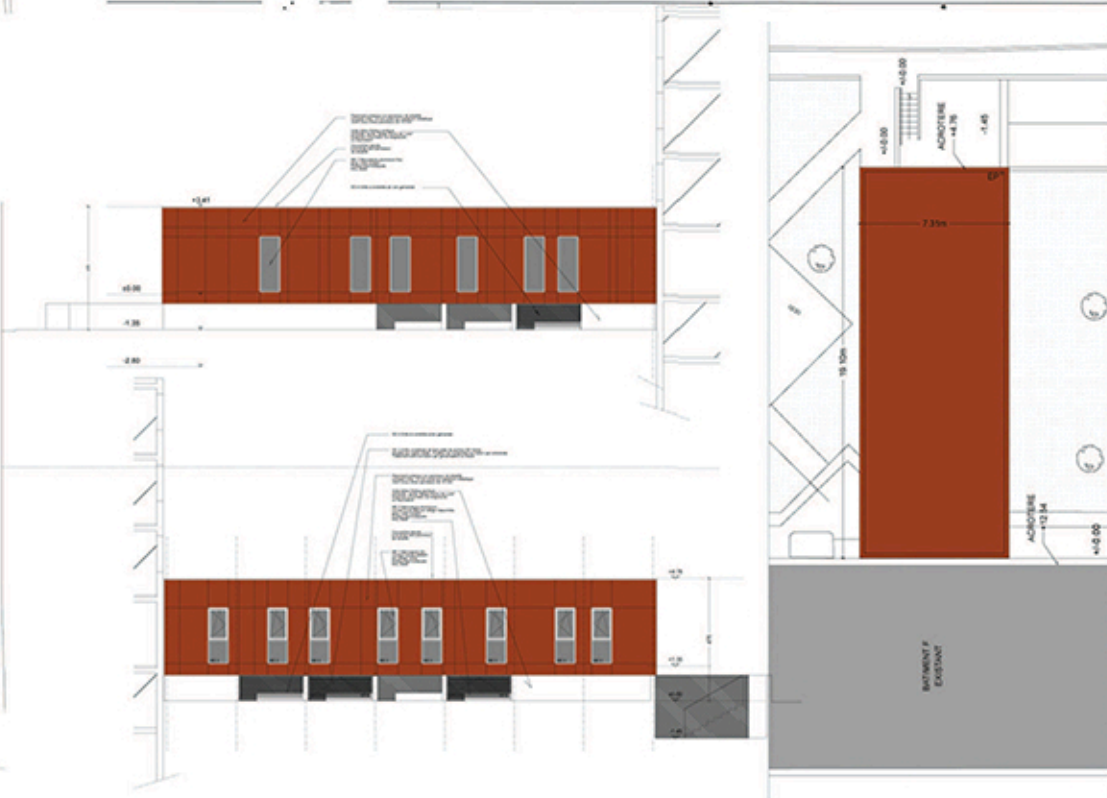
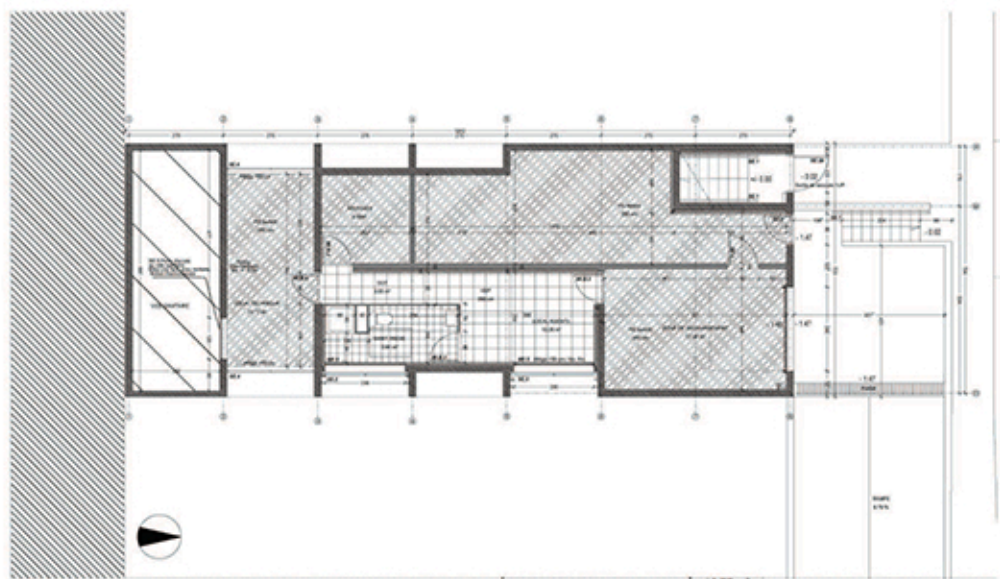
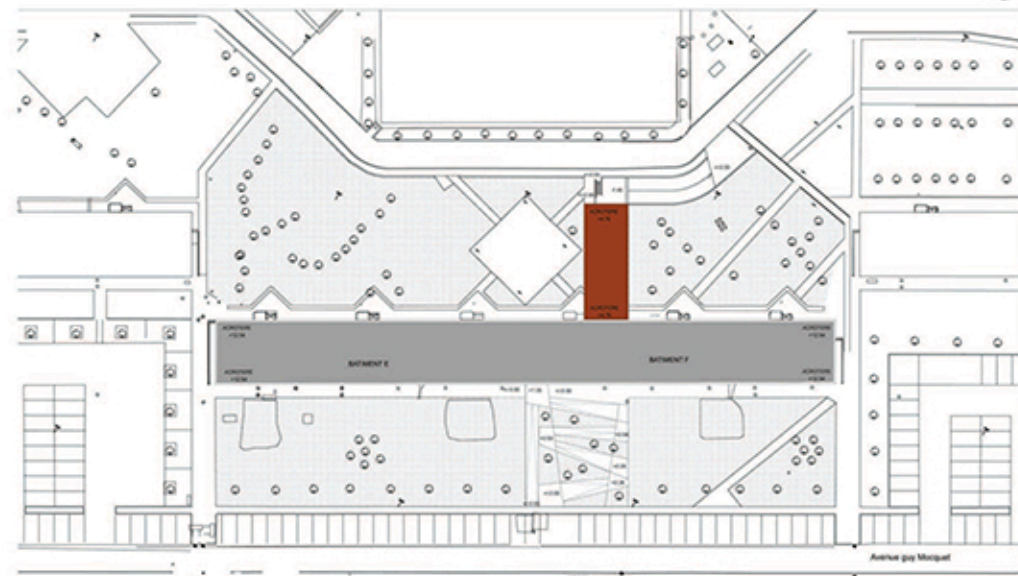
ELEVATION - COUPE DE SURHAUT









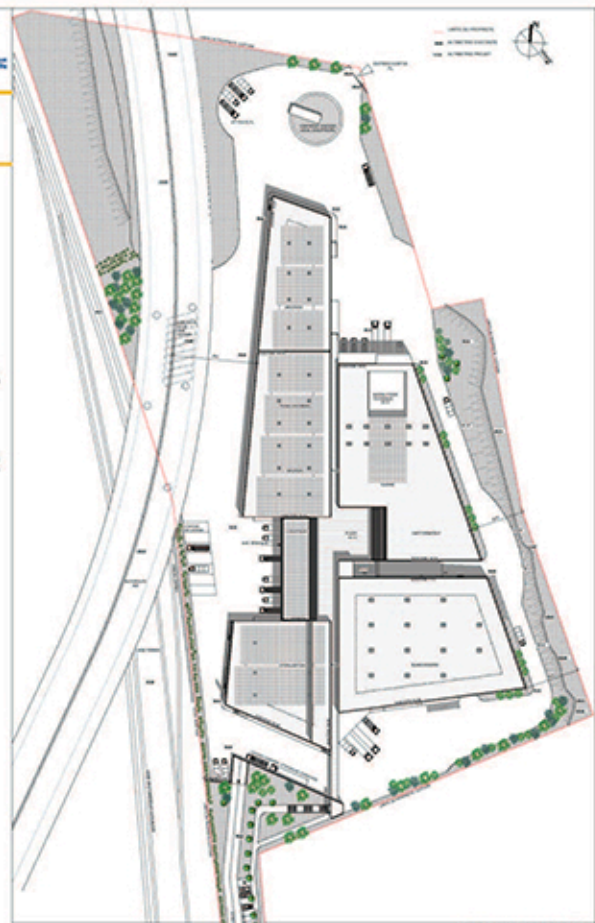
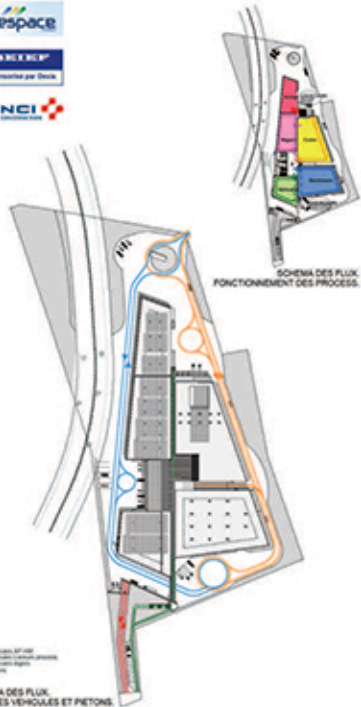


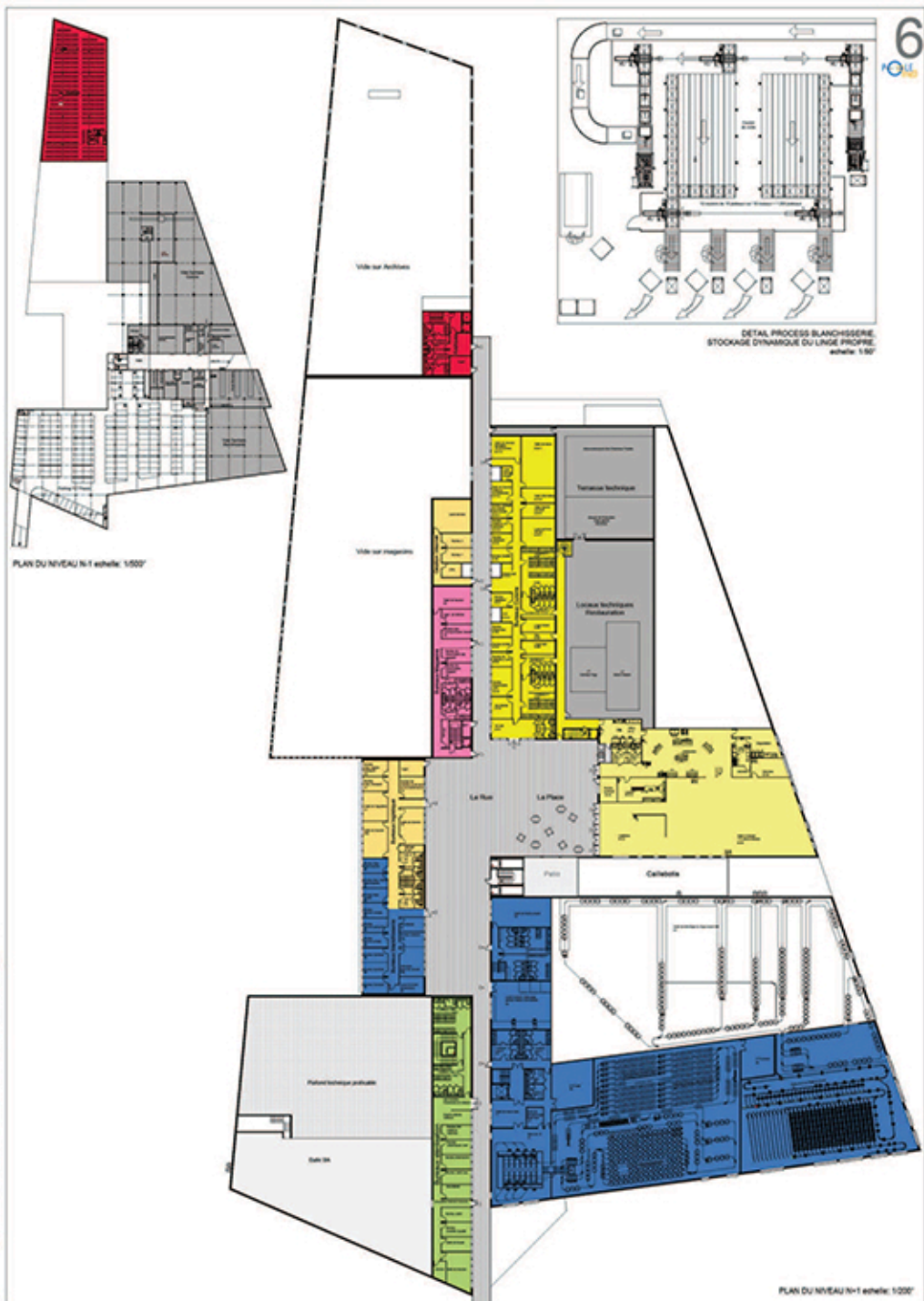
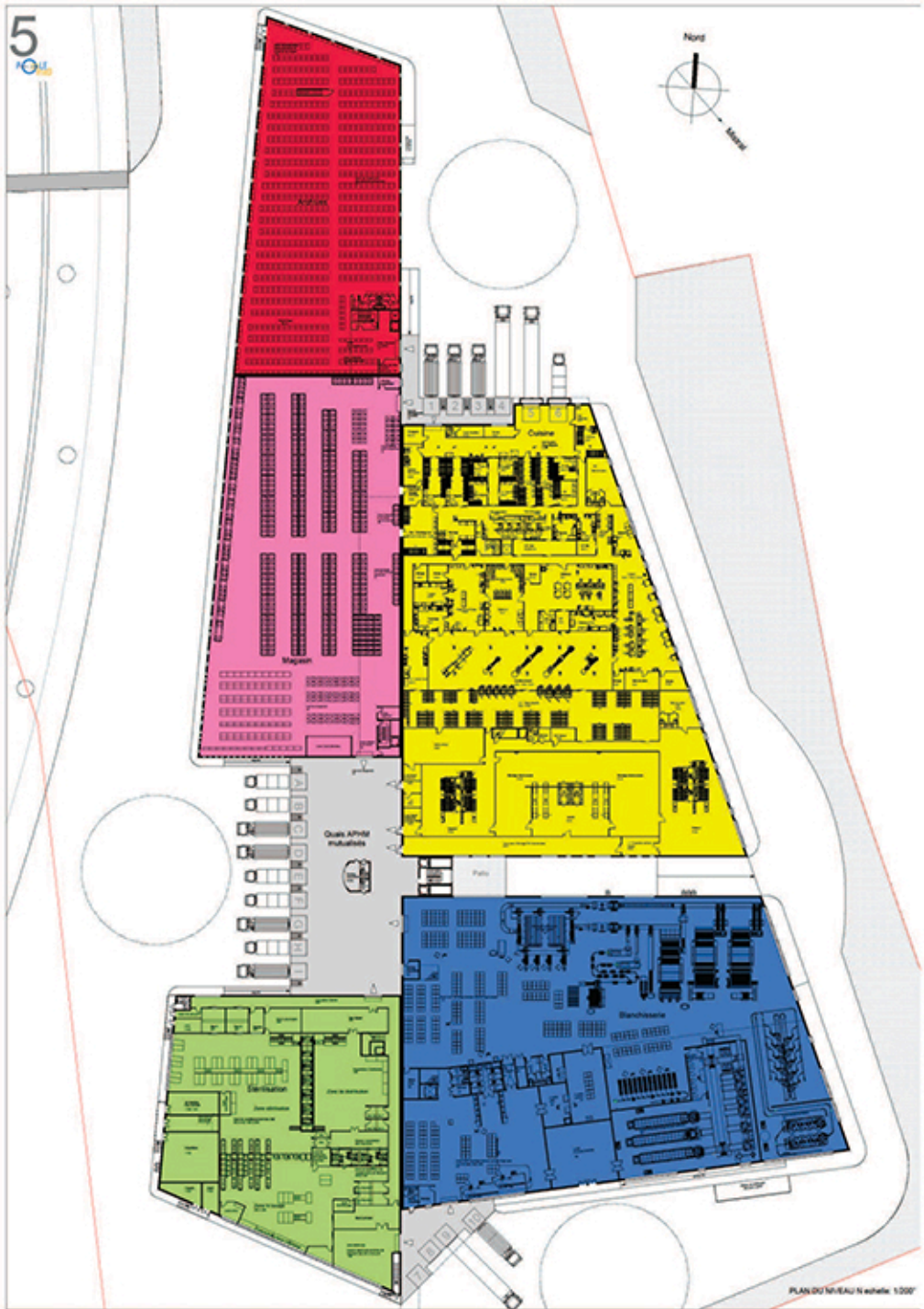
CONCEPTION, FINANCEMENT, CONSTRUCTION, EQUIPEMENT,
INSTALLATION,
MISE EN SERVICE ET MAINTENANCE D'UNE
PLATE FORME LOGISTIQUE

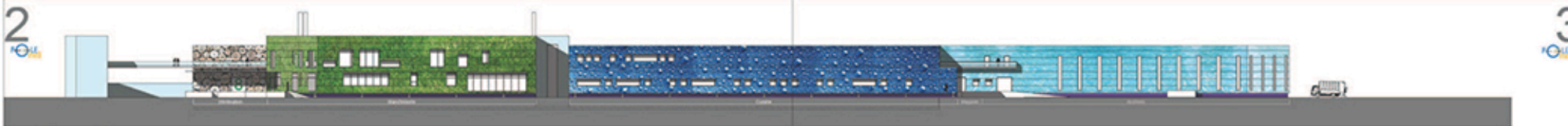
Gespac

IN BILÉ BIP
Région Provence-Alpes-Côte d'Azur

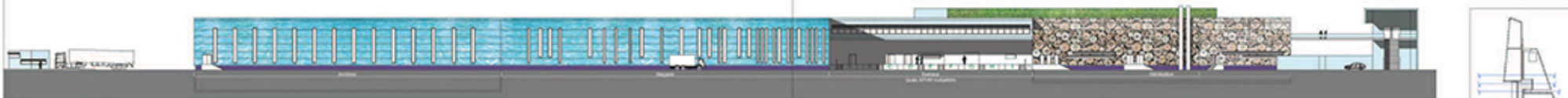
VINCI







FACADE EST échelle: 1:200'



FACADE OUEST échelle: 1:200'



FACADE NORD échelle: 1:200'



FACADE SUD échelle: 1:200'



PLAN DE SITUATION ENVIRONNEMENTALE

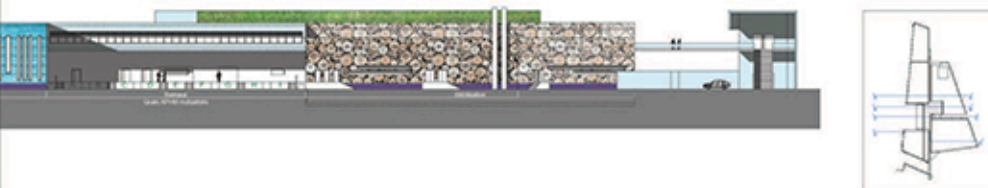


VUE DE L'ENTREE PRINCIPALE A HAUTEUR D'ORDRE



VUE D'UNUS LA RUE VERS LA PLACE

"La rue haute qui irrigue le projet, constitue un axe fédérateur pour tout le personnel. Elle s'élargit pour former une place qui constitue un agréable lieu de rencontre sur lequel s'ouvre le self."



COUPE TRANSVERSALE AA échelle: 1:200'



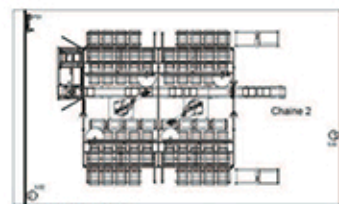
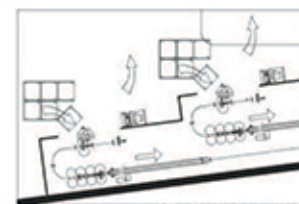
COUPE TRANSVERSALE BB échelle: 1:200'

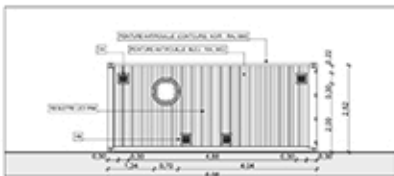
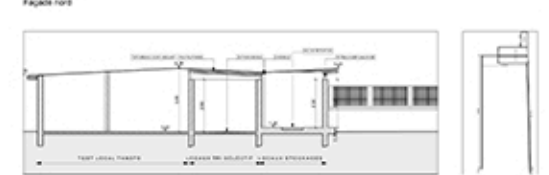
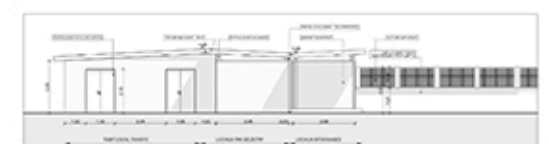
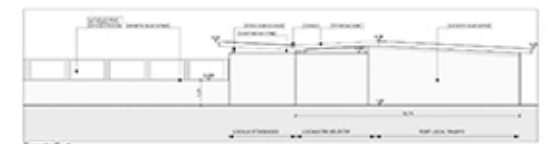
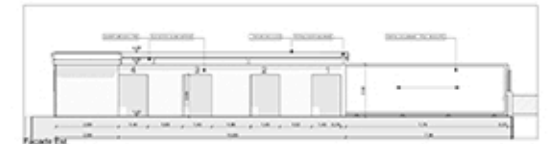
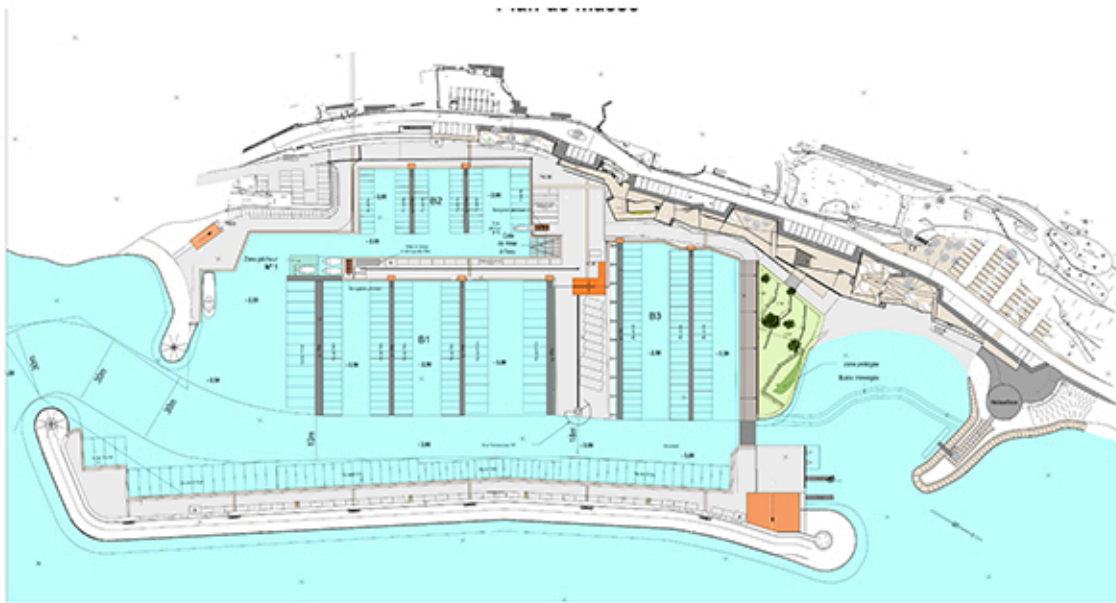


COUPE TRANSVERSALE CC échelle: 1:200'

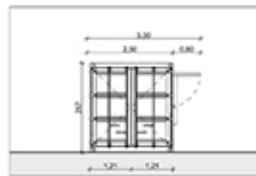


COUPE TRANSVERSALE DD échelle: 1:200'

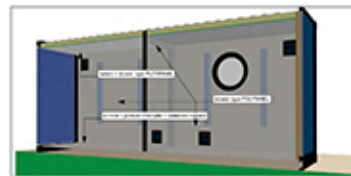
DETAIL PROCESS CUISINE
DESINFECTATION AUTOMATISEE DES BOTTES échelle: 1:50'DETAIL PROCESS CUISINE
CHAINE D'ALLOTTISSEMENT ROBUSTEE échelle: 1:50'DETAIL PROCESS BLANCHISSERIE
POSTES ADOOROVAGE LINGE SALE échelle: 1:50'



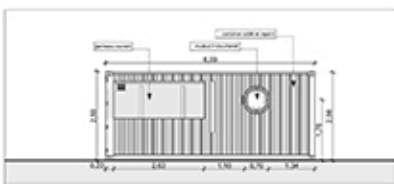
Façade



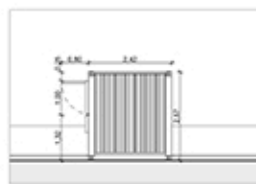
Façade



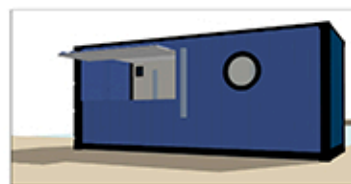
Coupe perspective



Façade

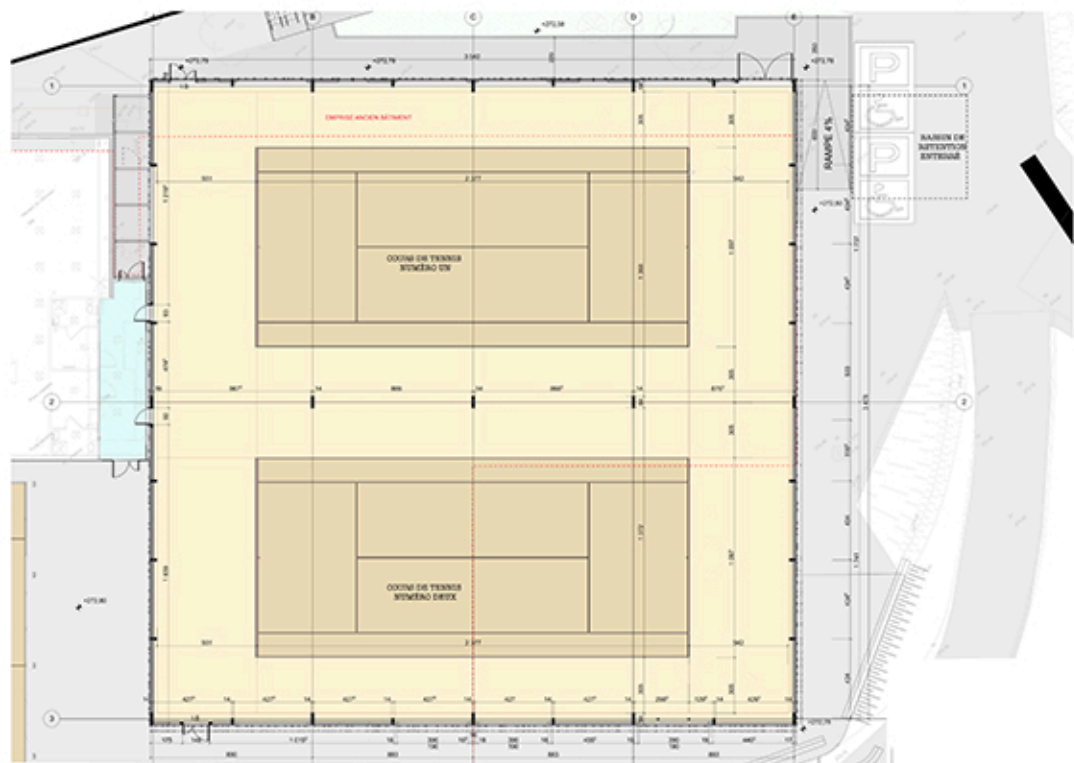


Façade

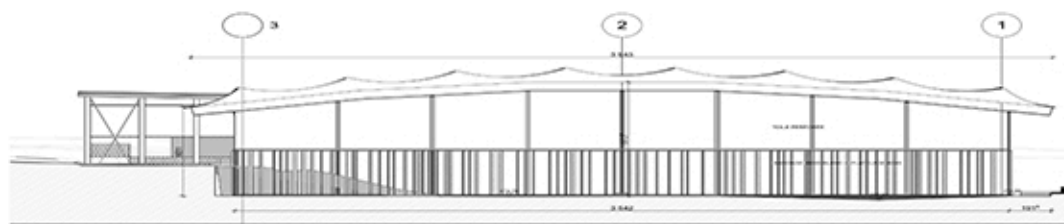


Perspective

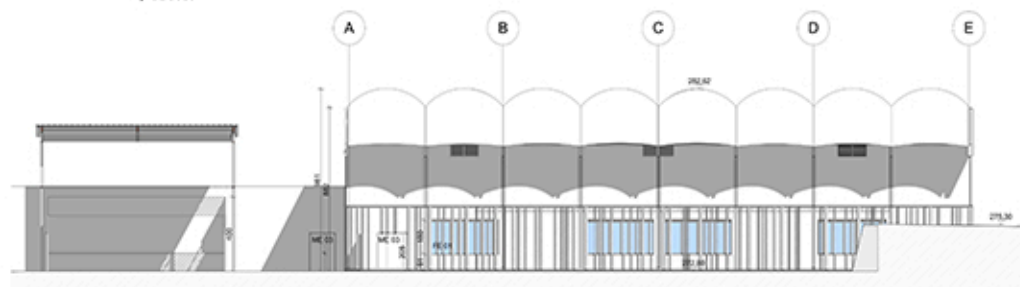




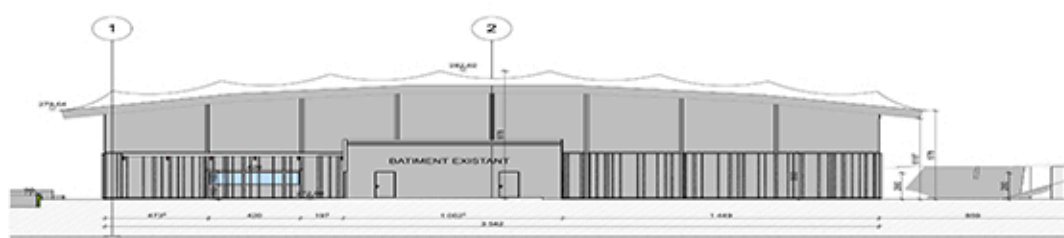
FAÇADE OUEST



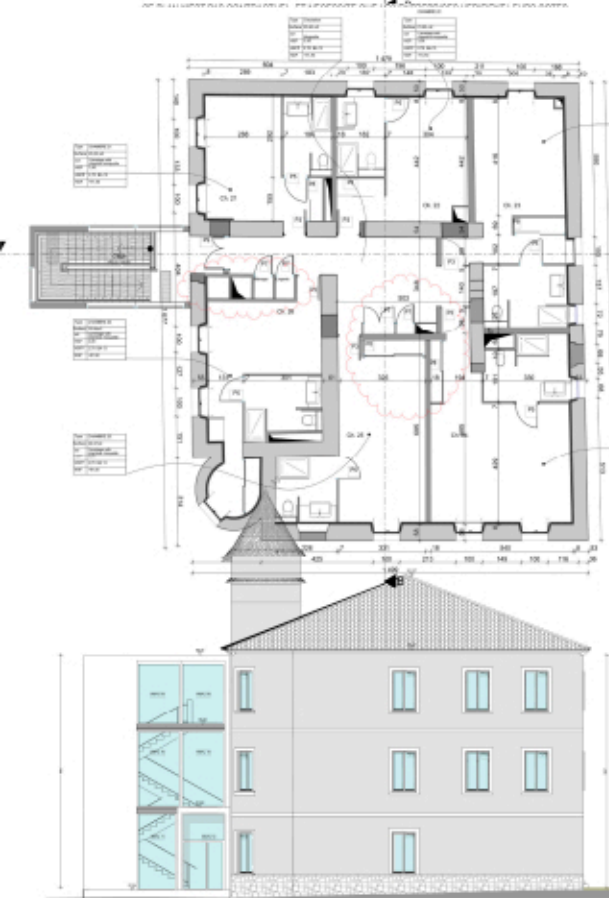
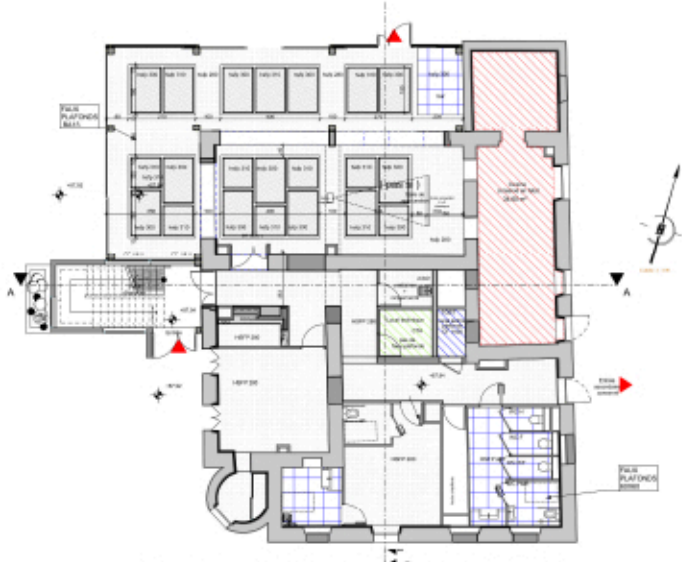
FAÇADE SUD



FAÇADE EST



FAÇADE NORD





46 LOGEMENT SOCIAUX LE CANNET

